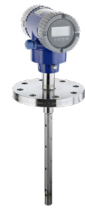


Selection guide

Radar



	LG01	LR01
Application	For liquids and solids in storage and process applications	For liquids in storage and process applications
Frequency range	L-band/1 GHz	X-band/10 GHz
Dielectric constant	≥1.4 (TBF 1.1)	≥1.8 (TBF 1.1)
Measuring range	0 to 40 m/0 to 130 ft	0 to 30 m/0 to 98 ft
Accuracy	±3 mm/±0.1"	±5 mm/±0.2"
Repeatability	±1 mm/±0.04"	±1 mm/±0.04"
Converter	C (compact), F (field remote)	C (compact), F (field remote)
Housing material	Aluminum, stainless steel	Aluminum, stainless steel
Ingress protection	IP 66, 67; NEMA 4X	IP 66, 67; NEMA 4X
Antenna installation*	LPR and TLPR*	TLPR*
Antenna type (material), size (beam angle — if applicable)	Double rod, single rod, single rod (segmented), coaxial, double cable, single cable Ø2 mm/.08", single cable Ø4 mm/.15"	Metallic Horn: (316L) DN65/2.5" (for bypass chamber), Metallic Horn: (316L) DN80-200/3-8" (32-12°) Wave Horn: (PP or PTFE) 043 mm/1.69" (20°), Metallic Wave Guide: (316L) 030 mm/1.18"
Process connection	Thread: G½, G¾, G1, G1½, ½ NPT, ¾ NPT, 1 NPT, 1½ NPT	Thread: G1½, G2, 1½ NPT, 2 NPT; Flange: DN50- 200, 2-8", 50-200A
Gasket	FKM/FPM, Kalrez® 6375, EPDM, PFA	FKM/FPM, Kalrez® 6375, EPDM, PFA
Ambient temperature	-40 to +80 °C/-40 to +176 °F	-40 to +80 °C/-40 to +176 °F
Process temperature	-60 to +300 °C/-58 to +572 °F (higher on request)	-60 to +250 °C/-76 to +482 °F (higher on request)
Process pressure	-1 – 40 barg/-14.5 – 580 psig (higher on request)	-1 – 40 barg/-14.5 – 580 psig
Power supply	11.5-30 V DC (Exi), 13.5 – 36 V DC (Exd), 2-wire	11.5-30 V DC (Exi), 13.5 – 36 V DC (Exd), 2-wire
Output	2-wire: 4-20 mA (HART® 6), FOUNDATION™ Fieldbus, PROFIBUS PA	2-wire: 4-20 mA (HART® 6), FOUNDATION™ Fieldbus, PROFIBUS PA
Accessories	Weather protection	Antenna extensions of various shapes and lengths, heating/cooling systems for metallic horn antennas, weather protection
Options	METAGLAS® dual safety sealing probe made of Hastelloy® C-22 or probe with a PVC, PVDF or PP protective sheath	METAGLAS® dual safety sealing
Approvals	ATEX, IECEx, cFMus, ÆÜËÍ×ð, INMETRO, NACE, CRN	ATEX, IECEx, cFMus, ÆÜËÍ×ð, INMETRO, NACE, CRN
SIL approval	SIL2	SIL2
PSS link	PSS EML3010 A-(en)	PSS EML3010 A-(en)

* LPR (Level Probing Radar): The antenna can be installed in a closed tank as well as outside. The antenna needs to point
**Approval pending

Selection guide

Radar (continued)



	LR54	LR74
Application	For liquids in basic process applications	For agitated and corrosive liquids applications
Frequency range	K-band/24 GHz	K-band/24 GHz
Dielectric constant	≥1.4 (TBF 1.1)	≥1.4 (TBF 1.1)
Measuring range	0 to 100 m/0 to 328 ft	0 to 100 m/0 to 328 ft
Accuracy	±2 mm/±0.08"	±2 mm/±0.08"
Repeatability	1 mm/±0.04"	1 mm/±0.04"
Converter	C (compact), F (field remote)**	C (compact), F (field remote)**
Housing material	Aluminum, stainless steel	Aluminum, stainless steel
Ingress protection	IP66, 68; 0.1 barg/1.45 psig	IP66, 68; 0.1 barg/1.45 psig
Antenna installation*	LPR and TLPR*	LPR and TLPR*
Antenna type (material), size (beam angle — if applicable)	Metallic Horn: (316L) DN40-200/1.5-8" (17-5°) Drop (PP): DN80/3" (9°), DN100/4" (7°), DN150/6" (5°)	Metallic Horn: (316L) DN40-200/1.5-8" (17-5°) Drop (PEEK): DN80/3" (9°), Drop (PTFE): DN80/3" (8°), DN100/4" (7°), DN150/6" (4°)
Process connection	Thread: G1, G1½, 1 NPT, 1½ NPT; Flange: DN40-200, 1½ – 8", 40-200A	Thread: G1½, 1½ NPT; Flange: DN40-200, 1½ – 8", 40-200A
Gasket	FKM/FPM, EPDM, Kalrez® 6375	FKM/FPM, EPDM, Kalrez® 6375
Ambient temperature	-40 to +80 °C/-40 to +176 °F	-40 to +80 °C/-40 to +176 °F
Process temperature	-50 to +130 °C/-58 to +266 °F	-50 to +200 °C/-58 to +392 °F (higher on request)
Process pressure	-1 – 16 barg/-14.5 – 232 psig	-1 – 100 barg/-14.5 – 1450 psig (higher on request)
Power supply	12 – 30 V DC (Exi), 16 – 36 V DC (Exd), 2-wire	12 – 30 V DC (Exi), 16 – 36 V DC (Exd), 2-wire
Output	2-wire: 4-20 mA (HART® 7), FOUNDATION™ Fieldbus**, PROFIBUS PA**	2-wire: 4-20 mA (HART® 7), FOUNDATION™ Fieldbus**, PROFIBUS PA**
Accessories	Antenna extensions in metal or PP, purging system, flange plate protection made of PP, weather protection, mounting brackets	Antenna extensions in metal or PTFE, purging/heating/cooling systems for metallic horn antennas, flange plate protection made of PTFE or PEEK, weather protection, mounting brackets
Options	M12 4-pin connector eliminates mis-wiring and speeds install	METAGLAS® dual safety sealing; M12 4-pin connector eliminates mis-wiring and speeds install
Approvals	ATEX, IECEx, cQPSus, NEPSI, NACE, CRN - ASME B31.3**	ATEX, IECEx, cQPSus, NEPSI, NACE, CRN - ASME B31.3**
SIL approval	Developed acc. to SIL2/3, IEC 61508 – 2010. The SIL approval is in the process of validation by TÜV Süd, Germany.**	Developed acc. to SIL2/3, IEC 61508 – 2010. The SIL approval is in the process of validation by TÜV Süd, Germany.**
PSS link	PSS 2A-7A5 A en	PSS 2A-7A3 A en

* LPR (Level Probing Radar): The antenna can be installed in a closed tank as well as outside. The antenna needs to point
**Approval pending

Selection guide

Radar (continued)



	LR75	LR64	LR65
Application	For liquids in narrow tanks with internal obstructions	For solids from granulates to rocks	For powders and dusty atmosphere
Frequency range	W-band/80 GHz	K-band/24 GHz	W-band/80 GHz
Dielectric constant	≥ 1.4 (TBF 1.1)	≥1.4 (TBF 1.1)	≥1.4 (TBF 1.1)
Measuring range	0 to 100m/0 to 328 ft	0 to 100m/0 to 328 ft	0 to 100m/0 to 328 ft
Accuracy	±2 mm/±0.08"	±2 mm/±0.08"	±2 mm/±0.08"
Repeatability	±1 mm/±0.04"	±1 mm/±0.04"	±1 mm/±0.04"
Converter	C (compact)	C (compact)	C (compact)
Housing material	Aluminum, stainless steel	Aluminum, stainless steel	Aluminum, stainless steel
Ingress protection	IP66, 68; 0.1 barg/1.45 psig	IP66, 68; 0.1 barg/1.45 psig	IP66, 68; 0.1 barg/1.45 psig
Antenna installation*	LPR and TLPR*	LPR*	LPR*
Antenna type (material), size (beam angle — if applicable)	Lens (PEEK): DN20; 3/4" (15°), DN25; 1" (10°), DN40; 1.5" (8°), DN70; 2.75" (4°)	Metallic Horn: (316L) DN80...200; 3...8" (9...5°); Drop (PP): DN80; 3" (9°), DN100 4" (7°), DN150; 6" (5°); Drop (PTFE): DN80; 3" (8°), DN100; 4" (7°), DN150; 6" (4°)	Lens (PEEK): DN40; 1.5" (8°), DN70; 2.75" (4°)
Process connection	Thread: G3/4, G1, G1 1/2, G3, 3/4 NPT, 1 NPT, 1 1/2 NPT, 3 NPT Flange: DN50...200, 2...8", 50...200A	Thread: G1, G1 1/2, 1 NPT, 1 1/2 NPT; Flange: DN80-200, 3-8", 80-200A	Thread: G1 1/2, G3, 1 1/2 NPT, 3 NPT Flange: DN50-200, 2-8", 50-200A
Gasket	FKM/FPM, EPDM, Kalrez® 6375	FKM/FPM, EPDM, Kalrez® 6375	FKM/FPM, EPDM, Kalrez® 6375
Ambient temperature	-40 to +80°C/-40 to +176°F	-40 to +80 °C/-40 to +176 °F	-40 to +80 °C/-40 to +176 °F
Process temperature	-50 to +200°C/-58 to +392°F	-50 to +130 °C/-58 to +266 °F	-50 to +200 °C/-58 to +392 °F
Process pressure	-1 – 40 barg/-14.5 – 580 psig	-1 – 16 barg/-14.5 – 232 psig	-1 – 40 barg/-14.5 – 580 psig
Power supply	12 – 30 V DC (Exi), 16 – 36 V DC (Exd), 2-wire	12 – 30 V DC (Exi), 16 – 36 V DC (Exd), 2-wire	12 – 30 V DC (Exi), 16 – 36 V DC (Exd), 2-wire
Output	2-wire: 4-20 mA (HART® 7), FOUNDATION™ Fieldbus**, PROFIBUS PA**	2-wire: 4-20 mA (HART® 7), FOUNDATION™ Fieldbus**, PROFIBUS PA**	2-wire: 4-20 mA (HART® 7), FOUNDATION™ Fieldbus**, PROFIBUS PA**
Accessories	Antenna extensions in metal, purging system, flange plate protection made of PEEK, weather protection, mounting brackets	Antenna extensions, slanted flange, purging system, weather protection, mounting brackets	Antenna extensions, slanted flange, purging system, weather protection, mounting brackets
Options	M12 4-pin connector eliminates mis-wiring and speeds install	M12 4-pin connector eliminates mis-wiring and speeds install	M12 4-pin connector eliminates mis-wiring and speeds install
Approvals	ATEX, IECEx, cQPSus, NEPSI, NACE, CRN - ASME B31.3**	ATEX, IECEx, cQPSus, NEPSI, NACE, CRN - ASME B31.3**	ATEX, IECEx, cQPSus, NEPSI, NACE, CRN - ASME B31.3**
SIL approval	Developed acc. to SIL2/3, IEC 61508 – 2010. The SIL approval is in the process of validation by TÜV Süd, Germany.**	Developed acc. to SIL2/3, IEC 61508 – 2010. The SIL approval is in the process of validation by TÜV Süd, Germany.**	Developed acc. to SIL2/3, IEC 61508 – 2010. The SIL approval is in the process of validation by TÜV Süd, Germany.**
PSS link	PSS 2A-7A4 A en	PSS 2A-7A1 A en	PSS 2A-7A2 A en

* LPR (Level Probing Radar): The antenna can be installed in a closed tank as well as outside. The antenna needs to point

**Approval pending